

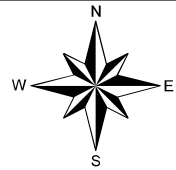
# Fort McCoy Non-Hunting/Fishing Activities

Appendix H to Fort McCoy  
Regulation 420-29

## Important

Fort McCoy has Land Rehabilitation and Maintenance (LRAM) sites in training areas on the installation. LRAM sites are clearly marked with red and white signs and yellow LRAM tape. Seibert stakes (red and yellow in color) are used to mark the perimeter of sensitive areas; a black vertical stripe on the stake indicates you are within the site. **DO NOT DRIVE** within, **DIG**, or **DISTURB** any LRAM sites and obey posted signs.

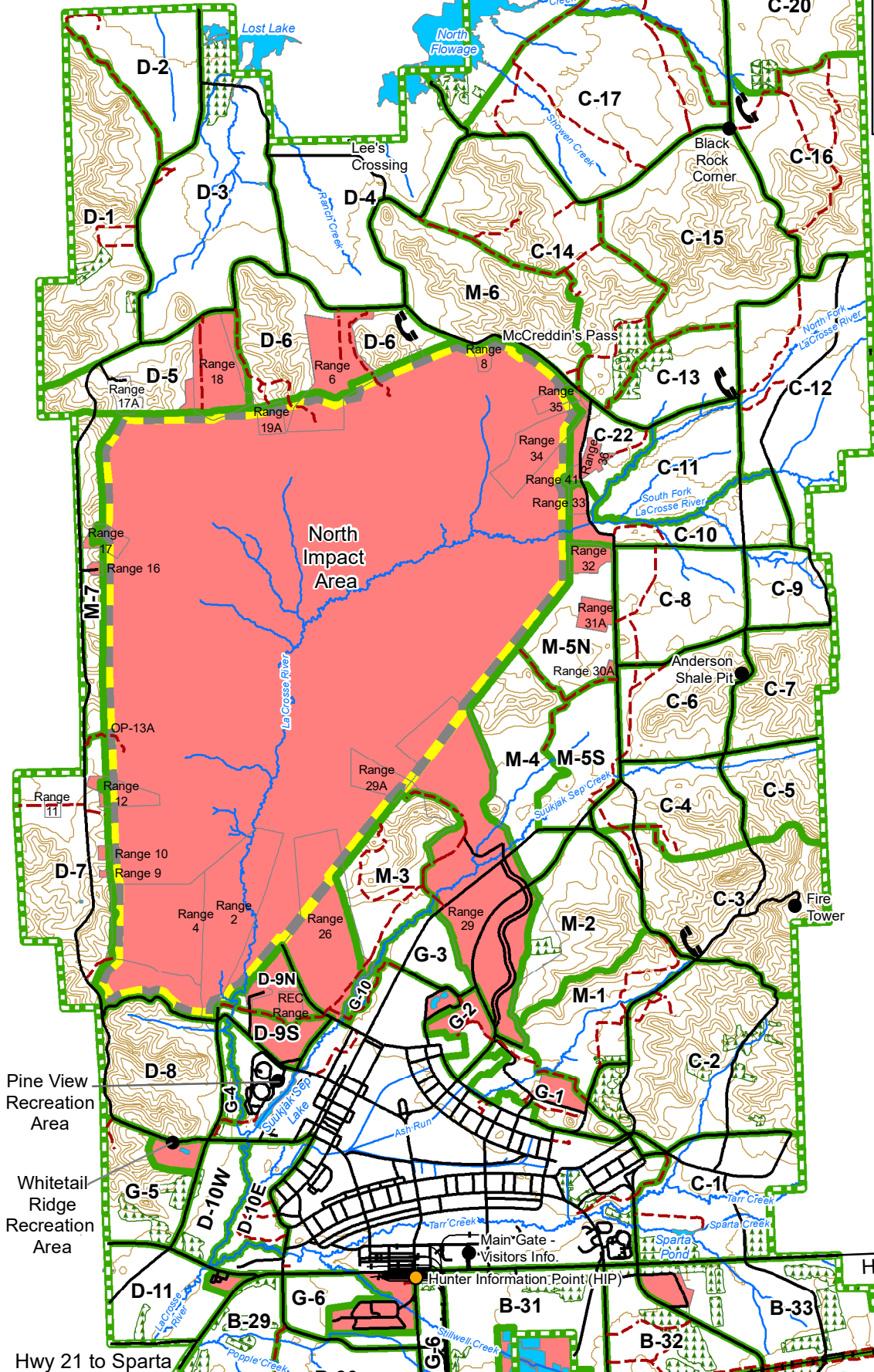
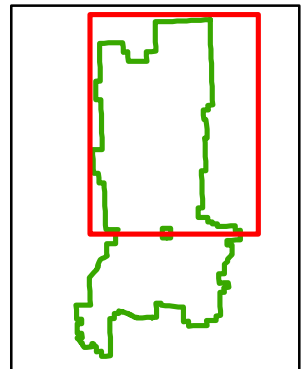
Vehicle traffic is **PROHIBITED** on the Fort McCoy boundary and North Impact Area firebreaks.



0 0.5 1 1.5 Miles

## Legend

- Fort McCoy Boundary
- Training Area Boundary
- North Impact Area Boundary
- No Entry
- Emergency Phone
- Hunter Information Point (HIP)
- Main Roads
- Trails
- Railroad
- Red Pine Plantation
- Contours
- Lakes
- Rivers/Streams/Creeks



Pine View  
Recreation  
Area

Whitetail  
Ridge  
Recreation  
Area

Hwy 21 to Sparta

Hwy 21 to  
Tomah

Directorate of Public Works  
Fort McCoy NRB  
Created by: K. Luepke  
Map Date: May 2021

# Fort McCoy Non-Hunting/Fishing Activities

Appendix H to Fort McCoy  
Regulation 420-29

## Important

Fort McCoy has Land Rehabilitation and Maintenance (LRAM) sites in training areas on the installation. LRAM sites are clearly marked with red and white signs and yellow LRAM tape. Seibert stakes (red and yellow in color) are used to mark the perimeter of sensitive areas; a black vertical stripe on the stake indicates you are within the site. DO NOT DRIVE within, DIG, or DISTURB any LRAM sites and obey posted signs.

Vehicle traffic is PROHIBITED on the Fort McCoy boundary and North Impact Area firebreaks.

Directorate of Public Works  
Fort McCoy NRB  
Created by: K. Luepke  
Map Date: May 2021

